

## FREE MATERIALS

We produce a range of free published materials for teachers as part of our information service, including our journal, **Remnants**, and our annual **Information For Teachers** booklet.

### Information for Teachers

This annual booklet is our basic introduction to the work of the Education Service. It contains practical suggestions for site-based work with sections on preparation, work on site and follow-up. Details of how to book a free educational visit are followed by a complete list, with maps, of all English Heritage sites and booking form.

### Remnants

The journal of the Education Service is published three times a year. This contains articles by teachers for teachers with practical ideas for classroom and on-site projects using the historic environment; features and news from the Education Service including teachers' courses and updates on new resources published during the year; book and video reviews.

**Remnants** is sent free to all schools and colleges via LEAs or direct mailing. Ask your LEA or Teachers' Centre for a copy.

### Site Information Leaflets

A leaflet is available for most English Heritage sites giving practical information for teachers such as opening hours and facilities, historical background, suggested learning opportunities and a guide to resources. You will receive a copy whenever you book a free visit, and individual copies are available separately on request.

The Education Service aims to provide teachers with as much help as possible. If you have any request for information please contact us at:  
**English Heritage  
Education Service,  
Keysign House,  
429 Oxford Street,  
London W1R 2HD**

Tel: 071-973 3442/3

# ORDER FORM

Send to:

English Heritage, PO Box 229, Northampton NN6 9RY

Please complete in BLOCK CAPITALS and tick boxes as applicable.

Please send the following publications or videos:

CODE NO	TITLE	PRICE	No of Copies	TOTAL
<input type="text"/>	<input type="text"/>	<input type="text"/>	<input type="text"/>	<input type="text"/>
<input type="text"/>	<input type="text"/>	<input type="text"/>	<input type="text"/>	<input type="text"/>
<input type="text"/>	<input type="text"/>	<input type="text"/>	<input type="text"/>	<input type="text"/>
<input type="text"/>	<input type="text"/>	<input type="text"/>	<input type="text"/>	<input type="text"/>
<input type="text"/>	<input type="text"/>	<input type="text"/>	<input type="text"/>	<input type="text"/>
<input type="text"/>	<input type="text"/>	<input type="text"/>	<input type="text"/>	<input type="text"/>
Post and Packing UK: £0.95 per item EEC and Worldwide Surface Mail £1.50 per item Digging Deeper into History £3.50 (UK only)			Sub Total	
			Add Post and Packing	
			GRAND TOTAL	

### Method of Payment

I enclose a cheque/postal order, payable to English Heritage

Please invoice (establishments only)

Please charge my  Access or  Visa account

Card No.

Expiry Date

Signature

Name (Mr/Mrs/Ms)

Address

Telephone No.

Postcode

Invoice address (if different)

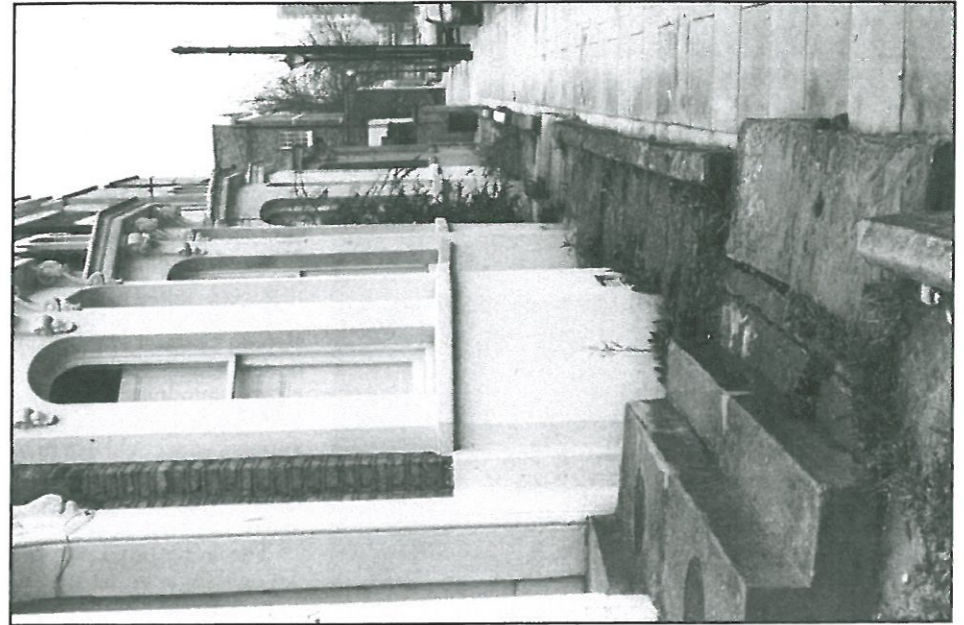
Postcode

Please send me a copy of your 1990 Information For Teachers booklet

## STREETWISE

### The case of the missing railings

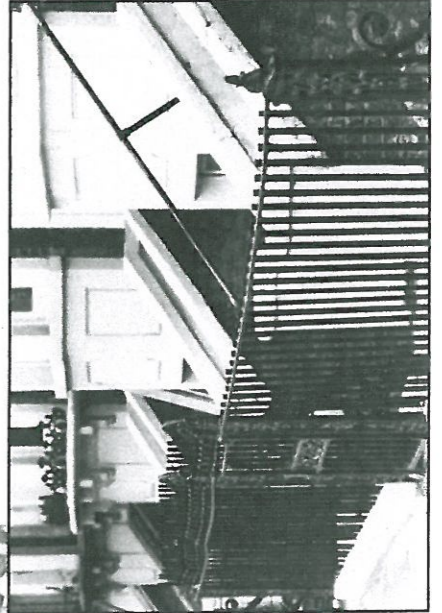
Although the war is long past and it is unusual to find any undeveloped bomb sites or even prefabs, there are wartime clues left in almost every town for the sharp-eyed to spot.



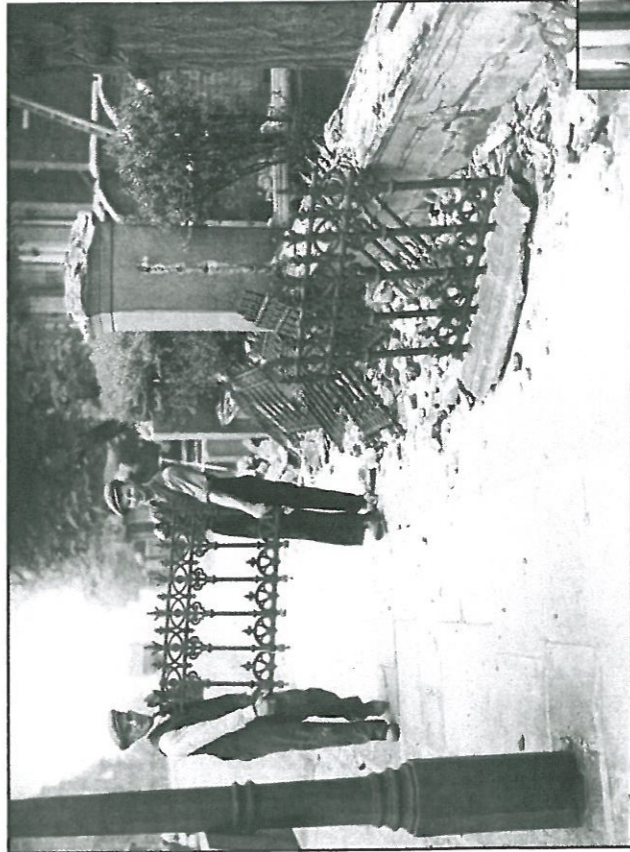
△ Look for the remains in front of Victorian terraces, round squares and parks and even round your school perimeter if it was built more than 40 years ago. This London terrace had its railings removed. The stone footings are still in place but have been turned over to make a low edging.



△ It is often possible to see where the railings once were. This picture shows the remains of some railings where they were cut level with the stone footings. You can also see the lead in which the railings were set.



Streetwise investigates clues to the past that can often be found in the streets near your school.



△ In 1940 shortage of metal led to railings being removed for scrap. This picture was taken in Chalk Farm, London, in April of that year.

△ Where railings were not just decorative they could be kept. For example, they prevented people falling into basement areas, a severe danger during the blackout. Perhaps the owner of this house in Bow, London, where all the iron frials have been cut off, was determined to make at least some contribution to the war effort.



# Hellfire Corner~the secret war tunnels of Dover Castle

Beneath Dover Castle, one of England's best-loved landmarks, a secret underground world has been hidden for forty years. English Heritage has opened a major new exhibition, revealing what was once one of the nation's largest underground military HQs.

The white cliffs of Dover look down over the peaceful waters of the English channel. But only fifty years ago they witnessed the outbreak of the Second World War, Dunkirk and the Battle of Britain.

Between 1939 and 1945, the cliffs beneath Dover's great medieval castle were home to staff from the three British forces, the Royal Navy, the army and the RAF, working to defend the English coast from a German invasion. It was fear of invasion from another quarter, however,

which started the history of the underground tunnels in which they lived, carved into the chalk by generations of military engineers.

During the Napoleonic wars between 1793 and 1815, the English fortified Dover against possible French invasion. The Western Heights were crowned with the largest fortification built in Britain during these wars. Gun batteries were constructed around the harbour and the castle defences were strengthened and modernised. Every effort was made to

defend the castle, and the shore immediately below it.

To supplement existing low-level batteries and to bring extra guns to bear on the beach east of the harbour, military engineers drove a series of seven tunnels, or casemates, in from the cliff face below Dover Castle. Guns could be mounted in the mouths of these tunnels, and ventilation shafts built up from their rear to the cliff top to disperse smoke from the firing.

Passages linked the casemates and a sloping ramp was built from the underground chambers up to the castle. Guns, ammunition and stores were manhandled down the ramp for the gunners who could live in the tunnels with their weapons. A double spiral staircase linked them with the centre of the castle above.

The larger tunnels were brick-lined, not only for comfort but also for added protection against the shock of gunfire. The smaller tunnels and less important areas remained as unlined natural chalk, now bearing evidence of the pick-marks of miners and the graffiti of soldiers and sailors of the 19th century.

Although it is not so far known if any guns were mounted here the passages and casemates were kept in working order during the 19th century. Well before the end of that century the tunnels became less important as gun positions, but their secure location, deep inside the cliffs, made them ideal for a new and more important role in the 20th-century — an underground military headquarters.

During the First World War part of the tunnels were used as offices and stores, but at the outbreak of the Second World War they really came into their own.

In September, 1939, Dover Castle was once again a hive of activity. Royal Navy destroyers and patrol boats were based in the harbour, defending the Straits of Dover from enemy warships and ensuring the safe transfer of men and supplies between English and French ports. Naval headquarters were established in the underground tunnels by Vice-Admiral Bertram Ramsay.

Here, nearly 200 feet below ground, secure against air attack, Ramsay's staff created an operations' room and offices in the easternmost casemate. Desks, chairs, telephones, teleprinters, typewriters, chart chests and map boards were all installed.

The army's Coast Artillery were housed in the casemate next to the navy. They were responsible for directing the gun batteries protecting Dover and other harbours and vulnerable beached along the Channel coast of Kent and part of east Sussex. By 1941, over 4,000 coast artillery troops were controlled from this casemate.

*LEFT: An operations room as it was recently discovered and before work started to present it to the public. It was here that Vice Admiral Ramsay planned many great campaigns, and Winston Churchill visited.*

*OPPOSITE: The Casemate Level Balcony (before English Heritage started work on Hellfire Corner) looks out over the Channel, and tunnels run back into the Cliffs.*

In the next casemate, 24 men from the Post Office maintained the equipment for all the telephone circuits for the combined operations centre. Other tunnels were used for accommodation and in a short spur tunnel was an emergency generator.

These tunnels were behind the master-minding of the evacuation of a third of a million British and French troops from Dunkirk in late May and early June, 1940, and the Battle of Britain fought overhead in August and September, 1940.

Dover harbour and town were only three minutes flying time from enemy aircraft and within range of German coastal guns. By the end of the war nearly 2000 civilians had been killed and 900 properties destroyed. Convoys were also dogged by incessant attack, earning this area of coastal Kent the name Hellfire Corner.

For over four years Dover was Britain's premier fortress, with many famous visitors including, on several occasions, the Prime Minister, Winston Churchill. In 1942 the Royal Engineers extended the Command Centre for a hospital, dormitories and a kitchen.

There is also evidence that extra levels were added to the old Napoleonic casemates, and this extended network of tunnels was a vital part of Britain's defences until victory in 1945.

English Heritage is now able to present this important chapter of British history to the public, for the first time since one of



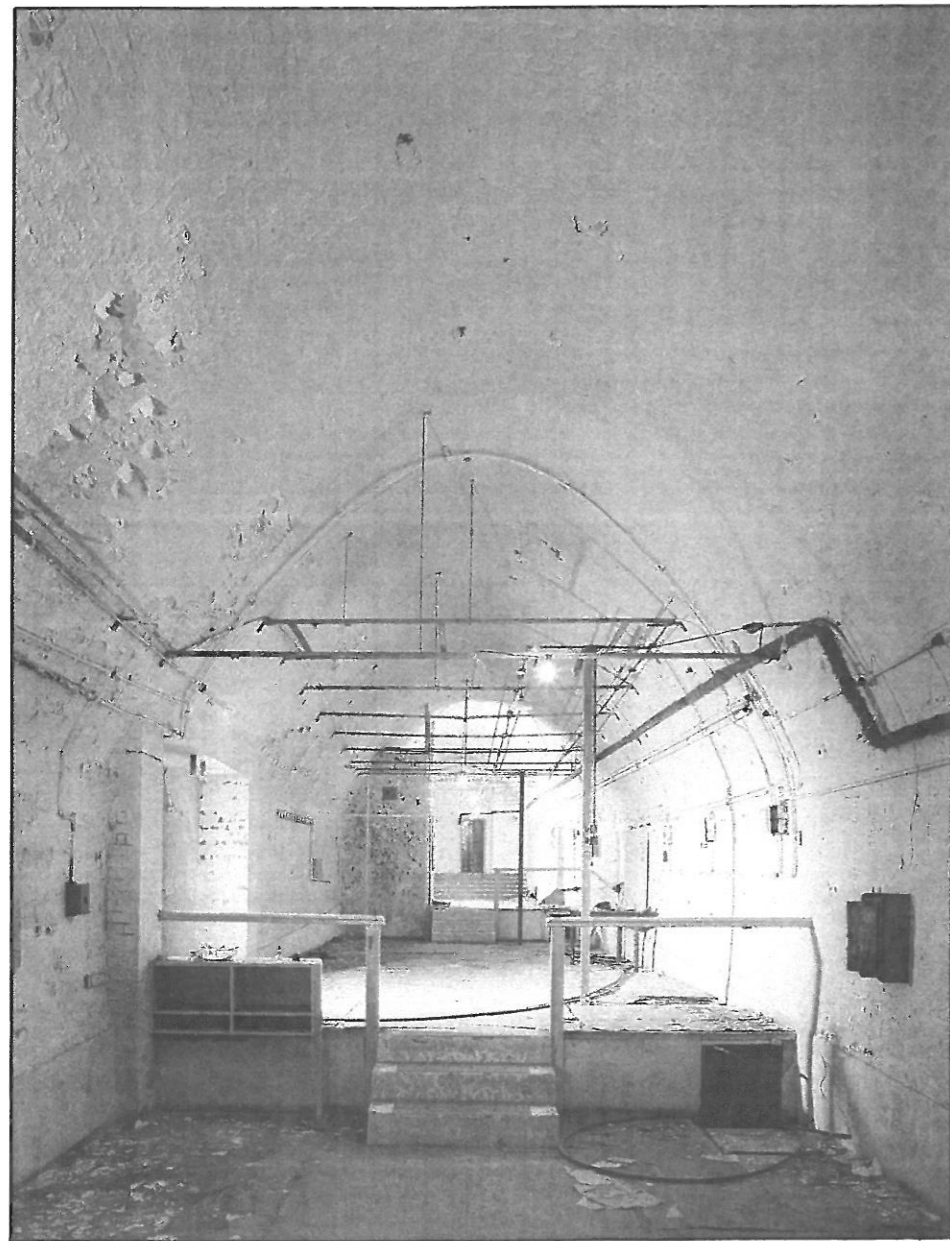
*ABOVE: Winston Churchill and Vice Admiral Ramsay in the operations room.*

the country's best kept secrets came off the Top Secret lists.

A project team has been working round the clock piecing together the history of the tunnels, co-ordinating their conservation and restoration, and the

production of a film as part of the presentation of the complex.

The exhibition of the Hellfire Corner Complex, as it is called, aims to present the tunnels very much as they are now, with well-informed and experienced



*English Heritage Photo Library*



*English Heritage Photo Library*



guides to help visitors get the most out of their visit and create an accurate portrayal of what it was like to live and work in the tunnel.

A former member of the Royal Engineers who was based at Dover during the Second World War has revealed that the underground complex was at one stage going to have up to six levels: Annexe, Bastion, Casemate, Dumpy, Esplanade and Foundation — ABCDEF.

Annexe was the top level built to house the hospital. A second floor (Bastion),

slightly above and to the rear of the Casemate tunnels already being used by the navy, was partly built, intending to house a combined HQ. Subsidence prevented the completion of this work, which was then transferred to a lower level, forming the area known as Dumpy. Even more ambitious plans for the further levels (Esplanade and Foundation) were never actually completed.

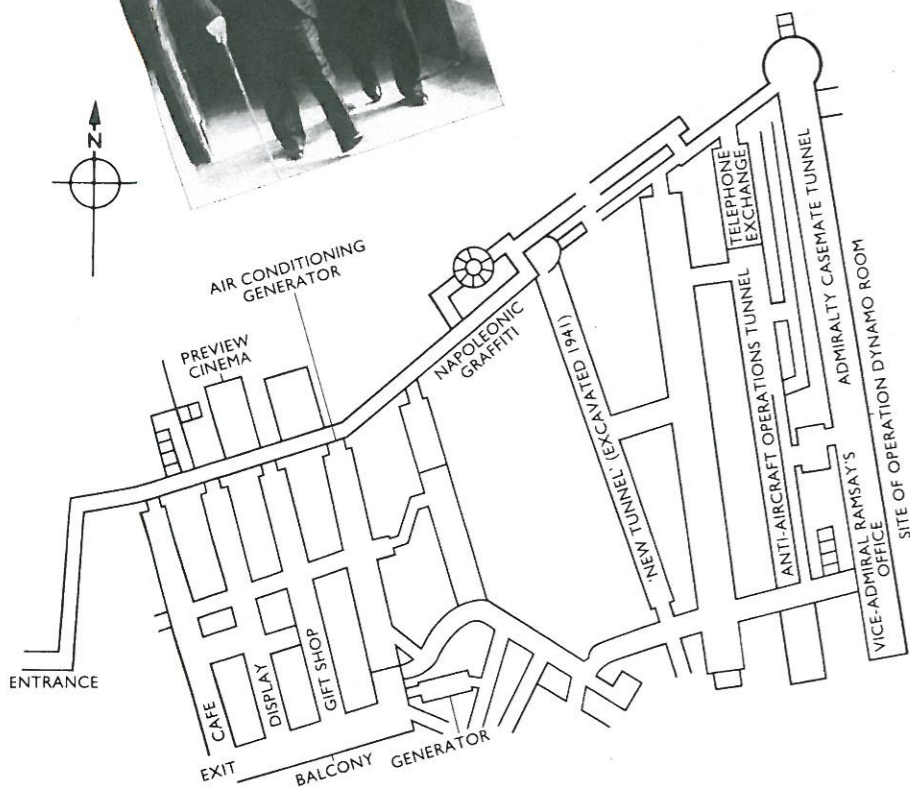
Initially only one of these levels is open to visitors — Casemate. Groups of up to 20 people will be escorted around the tunnel

by trained guides, after seeing a film in one of two cinemas near the entrance. The route, presented without extensive reconstruction, will have many highlights along the way, including the operations room.

The tour ends on the Casemate Level Balcony, cut out of the cliffs and overlooking the harbour and the channel. Fixed binoculars are available for looking out from the balcony to France, as Ramsay and Churchill did 50 years ago.



LEFT: A short guide to Hellfire Corner is available, price 25p, from the bookshop at Dover Castle.



Plan of the tunnels at casemate level.

### Booking a visit

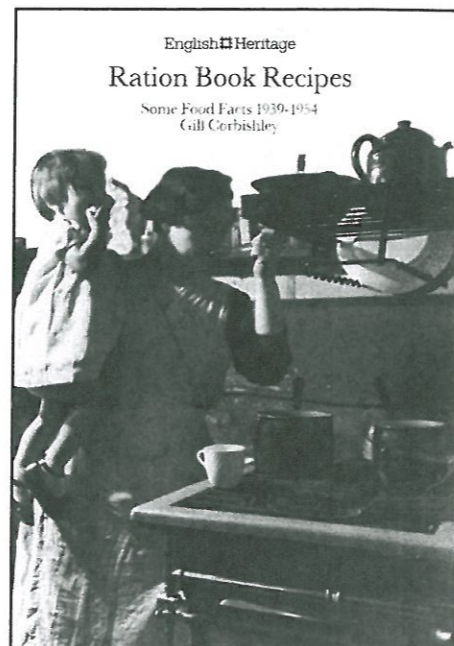
Educational groups up to a maximum of 20 including teachers and adult helpers can book a free visit to the exhibition. The tour takes approximately 50 minutes. Three time slots have been allocated for school groups each day so places are limited and early booking is advisable.

For a free booking form and further details please contact:

Ken Scott  
Monument Manager  
Dover Castle Dover  
Kent  
CT16 1HH  
Tel 0304-201628

The castle is open 10-6 daily for regular pre-booked school groups not visiting Hellfire Corner.

A free information leaflet is available and will be sent on request when booking.



### Ration Book Recipes Some Food Facts 1939-1954 Gill Corbishley

The demands and restrictions of rationing during these 'austerity years' during and after the Second World War are still vivid memories for many people. This book is a vivid summary of the facts about food and rationing, with noteworthy recipes and many illustrations from contemporary sources. There is a special section for teachers, presenting ideas for classroom projects and experiments together with suggestions for further reading. 36 pages, card covers, A4 size. 1990. ISBN 1-85074-288-X. Price: £3.50

See General Books in our  
**Resources Catalogue**

# Houses and Homes at Hampton Court

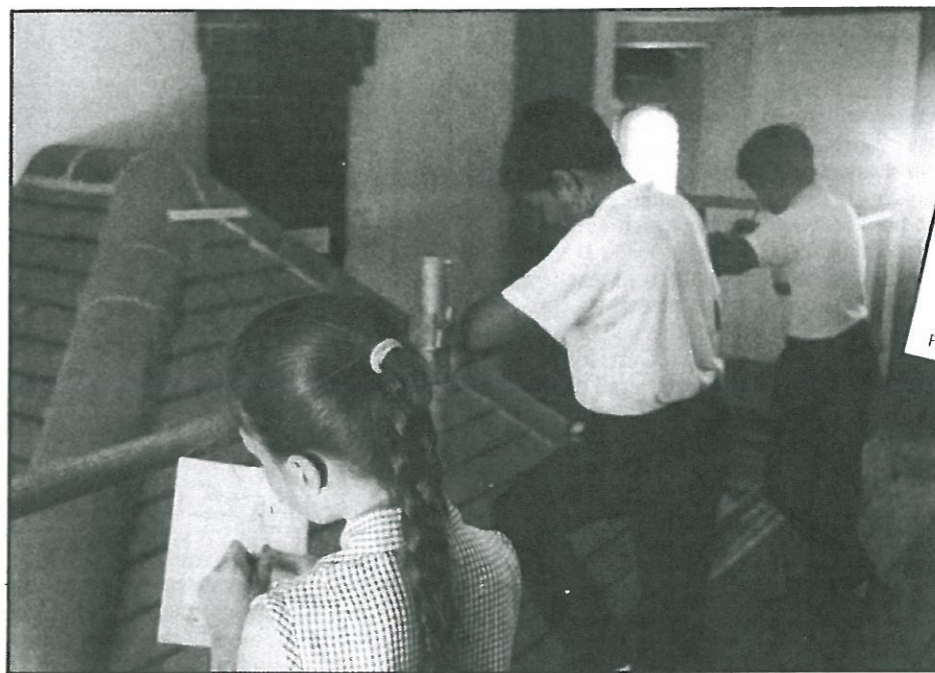
There is said to be a ghost, and there is disco lighting and pop music in the 'Careers for Young People' room, but it is not the gimmicks but bricks and mortar, tiles and slates, dry rot and condensation that are grabbing the attention of primary school children who visit the 'Houses and Homes' exhibition at Hampton Court.

It is just over a year since a group of local teachers helped us to put together a teachers' guide and worksheets for the children on a 'Houses and Homes' theme. Since then nearly two and a half thousand children have been through the exhibition and the visit rate is accelerating.

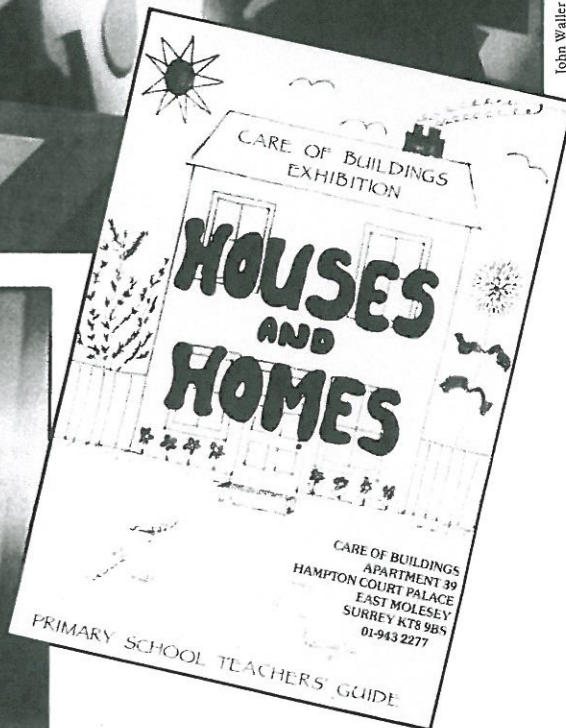
Coming to 'Houses and Homes' is like looking at umpteen different houses and building sites, but all in one place and under cover. Full scale, realistic reconstructions of parts of a house show how they are put together, what goes wrong — damp, infestation, damage etc — and what you can do to put things right.



John Waller



John Waller



ABOVE: School children on a visit to the 'Houses and Homes' exhibition at Hampton Court.

LEFT: Shedding light on windows — giving an overview of roofs.

**Houses and Homes** is a permanent exhibition situated in a wing of Hampton Court Palace, but run separately by the Building Conservation Trust, an independent educational charity. Opening hours: 9.30-5.00 Monday-Friday. Guide and Worksheets cost £2.50 including post and packing, and come with a complimentary ticket. Admission for parties is 75p per child, with all adults free.

To get the Houses and Homes Teachers' Guide and Pupil Worksheets, please phone Pippa Burmester on 081-943 2277 or write to her at —

The Building Conservation Trust  
Apartment 39  
Hampton Court Palace  
East Molesey  
Surrey  
KT8 9BS

The exhibition was not designed with school children particularly in mind. Its appeal is equally — but differently — to the general public, often inspired by a specific problem of their own, to poly students, and to the staffs of local authority housing departments and housing associations. But the reactions of small children concentrate the mind wonderfully, and they help us keep things simple and cut out builders' and architects' mumbo jumbo, to the benefit of all.

'Houses and Homes' does all the right abstract things. It stimulates children to question, observe, identify, hypothesise, record. It provides ample scope for the cross curricular approach; a topic like 'materials' can be related to Science, Maths, and CDT. We are currently

working on a series of new 'Project Packs' on exactly those lines, enabling the exhibition to be more firmly locked into the requirements of the National Curriculum. But in the end teachers agree, it all works because children love it — meeting the boring beetles, standing on a roof, keeping granny warm, drawing air bricks; and, yes, there is the ghost dancing to a disco beat.

John Waller  
Assistant Director,  
The Building Conservation Trust